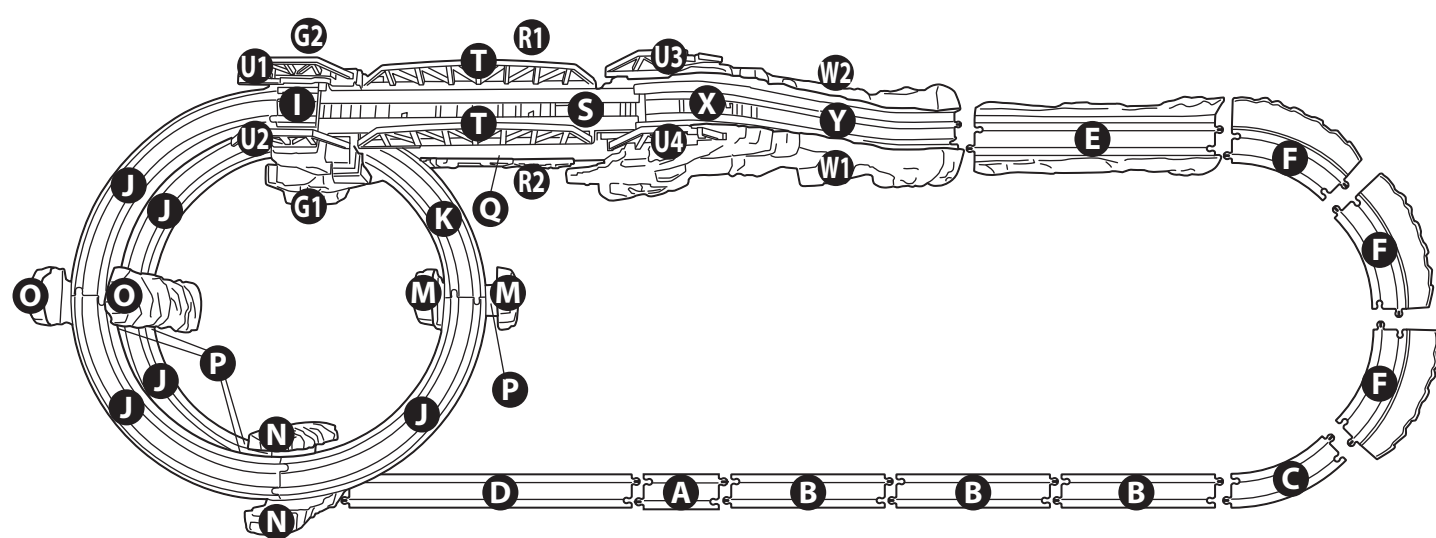


## Track Layout



NOTE: Adults should remove & discard rubber bands holding tracks together.

## Checklist

<b>A</b> X 1	<b>B</b> X 3	<b>C</b> X 1	<b>D</b> X 1	<b>E</b> X 1	<b>F</b> X 3
Half Straight	Straight	Curve	Sloped Straight	1/4 Valley Straight	Cliff Side Curve
<b>G</b> X 1	<b>H</b> X 1	<b>I</b> X 1	<b>J</b> X 1	<b>K</b> X 1	<b>L</b> X 6
Rear Mountain Wall-Right	Rear Mountain Wall-Left	Special Function Crossbeam	Mountain Quarter Track	Mountain Sloped Curve	Mountain Sloped Turn Out (R)
<b>M</b> X 2	<b>N</b> X 2	<b>O</b> X 2	<b>P</b> X 6	<b>Q</b> X 1	<b>R</b> X 1
Mountain Support (Level 1)	Mountain Support (Level 2)	Mountain Support (Level 3)	Crossbeam	Interior Mine Track	Mine Track Trestle - Left
<b>S</b> X 1	<b>T</b> X 2	<b>U</b> X 1	<b>V</b> X 1	<b>W</b> X 1	<b>X</b> X 1
Mine Track Trestle - Right	Bridge Track	Center Bridge Arch	Rear Bridge Arch - Left	Rear Bridge Arch - Right	Front Bridge Arch - Right
<b>Y</b> X 1	<b>Z</b> X 1	<b>AA</b> X 1	<b>AB</b> X 1	<b>AC</b> X 1	<b>AD</b> X 1
Lower Blue Waterfall Track	Front Mountain Wall - Right	Front Mountain Wall - Left	Upper Blue Waterfall Track	Blue Waterfall Door	Thomas

## BATTERY INSTALLATION

Unscrew and lift cover away from top of Thomas.  
Install battery as indicated inside the battery compartment.  
For longer life use only alkaline batteries.  
Requires 1 "AA" (LR6) battery.  
If this toy begins to operate erratically, you may need to reset the electronics.  
Remove the batteries from the toy and replace it.

## BATTERY SAFETY INFORMATION

- In exceptional circumstances batteries may leak fluids that can cause a chemical burn injury or ruin your toy (product). To avoid battery leakage:
  - Non-rechargeable batteries are not to be recharged.
  - Rechargeable batteries are to be removed from the product before being charged (if designed to be removable).
  - Rechargeable batteries are only to be charged under adult supervision (if designed to be removable).
  - Do not mix alkaline, standard (carbon-zinc), or rechargeable (nickel-cadmium) batteries.
  - Do not mix old and new batteries.
  - Only batteries of the same or equivalent type as recommended are to be used.
  - Batteries are to be inserted with the correct polarity.
  - Exhausted batteries are to be removed from the product.
  - The supply terminals are not to be short-circuited.
  - Dispose of battery(ies) safely.
  - Do not dispose of this product in a fire. The batteries inside may explode or leak.

This equipment has been tested and found to comply with the limits for a Class B digital device, pursuant to part 15 of the FCC rules. These limits are designed to provide reasonable protection against harmful interference in a residential installation. This equipment generates, uses and can radiate radio frequency energy and, if not installed and used in accordance with the instructions, may cause harmful interference to radio communications. However, there is no guarantee that interference will not occur in a particular installation. If this equipment does cause harmful interference to radio or television reception, which can be determined by turning the equipment off and on, the user is encouraged to try to correct the interference by one or more of the following measures: Reorient or relocate the receiving antenna. Increase the separation between the equipment and receiver. Connect the equipment into an outlet on a circuit different from that to which the receiver is connected. Consult the dealer or an experienced radio/TV technician for help.

NOTE: Changes or modifications not expressly approved by the manufacturer responsible for compliance could void the user's authority to operate the equipment.

This device complies with part 15 of the FCC Rules. Operation is subject to the following two conditions:

- (1) This device may not cause harmful interference, and
- (2) this device must accept any interference received, including interference that may cause undesired operation.

- THIS CLASS B DIGITAL APPARATUS COMPLIES WITH CANADIAN ICES-003.

- CET APPAREIL NUMERIQUE DE LA CLASSE B EST CONFORME A LA NORME NMB-003 DU CANADA.

- Operation is subject to the following two conditions: (1) this device may not cause interference, and (2) this device must accept any interference, including interference that may cause undesired operation of the device.

- L'utilisation de ce produit est sujette aux conditions suivantes: (1) il ne doit pas produire de brouillage et (2) il doit pouvoir tolérer tout brouillage reçu, même si ce brouillage est susceptible de compromettre son fonctionnement.

## CONSUMER ASSISTANCE

service.fisher-price.com

1-800-432-5437 (U.S. & Canada)  
1-800-393-3332 (International)

Outside the United States:

Canada: Mattel Canada Inc., 6155 Freemont Blvd., Mississauga, Ontario L4R 3B2. www.service.mattel.com

Great Britain: Mattel UK Ltd, Varwell Business Park, Market Harborough, Leicestershire LE16 9EF. Tel: 01208 500033. www.service.mattel.com/uk

Mattel Europe, B.V., Gouda 1, 3300 AA Gouda, Netherlands.

Australia: Mattel Australia Pty. Ltd., 404 Owen Street, Locked Bag #870, Richmond, Victoria 3121 Australia.

New Zealand: 30-38 Wilkes Place, P.O. Box 100, Auckland 1142, New Zealand.

Thomas the Tank Engine & Friends™

CREATED BY BRISTOL ALLCROFT

Based on the Railway Series by The Reverend W. Awdry.

© 2011 Gullane (Thomas) Limited.

Thomas the Tank Engine & Friends and Thomas & Friends are trademarks of Gullane (Thomas) Limited.

© HIT Entertainment Limited.

HIT and the HIT logo are trademarks of HIT Entertainment Limited.

Fisher-Price, Inc., a subsidiary of Mattel, Inc., East Aurora, NY 14002 U.S.A.

PRINTED IN CHINA.

Manufactured for Fisher-Price, ©2011 Mattel, Inc. All Rights Reserved.

© and ™ designate U.S. trademarks of Mattel, Inc., unless otherwise indicated.

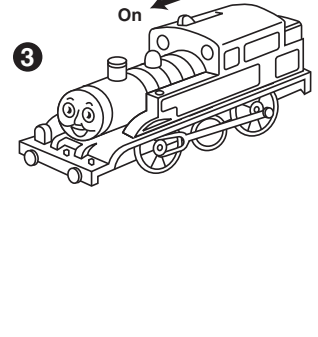
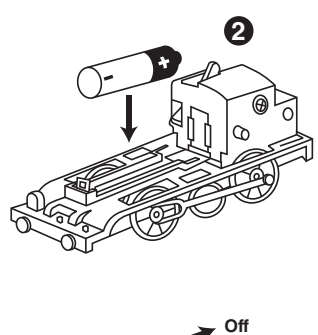
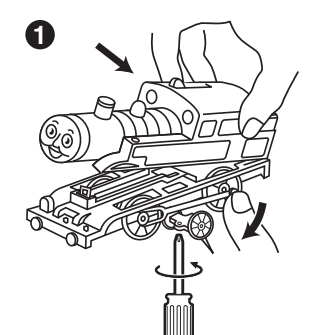
Mattel East Asia Ltd., Room 1106, South Tower, World Finance Centre, Harbour City, Tsimshatsui, HK, China.

Protect the environment by not disposing of this product with household waste (2002/96/EC). Check your local authority for recycling advice and facilities.

Thomas

1.2V X 1  
"AA" (LR6)

Required tool:  
Phillips screwdriver  
(not included)



CAUTION:  
To prevent entanglement,  
keep hair away from wheels.



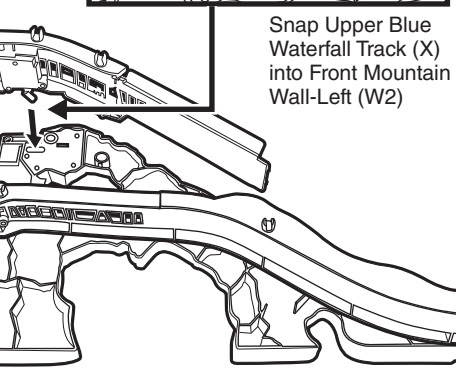
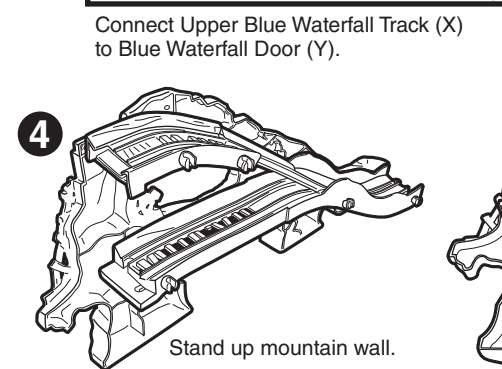
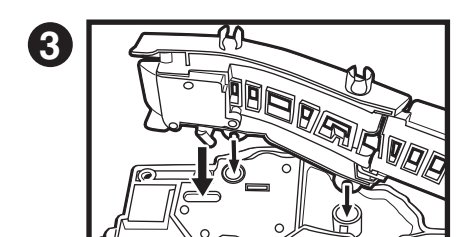
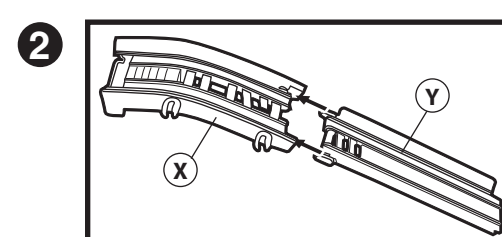
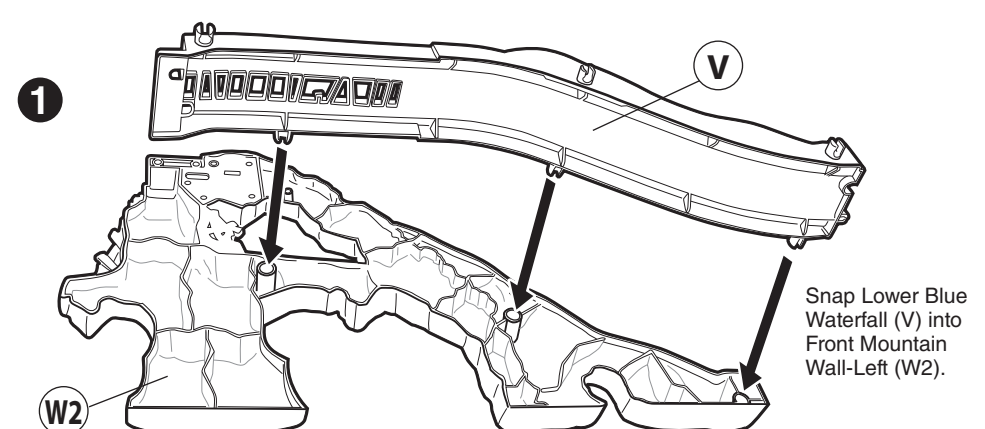
## THOMAS AT ACTION CANYON

INSTRUCTIONS

Please keep these instructions for future reference as they contain important information.

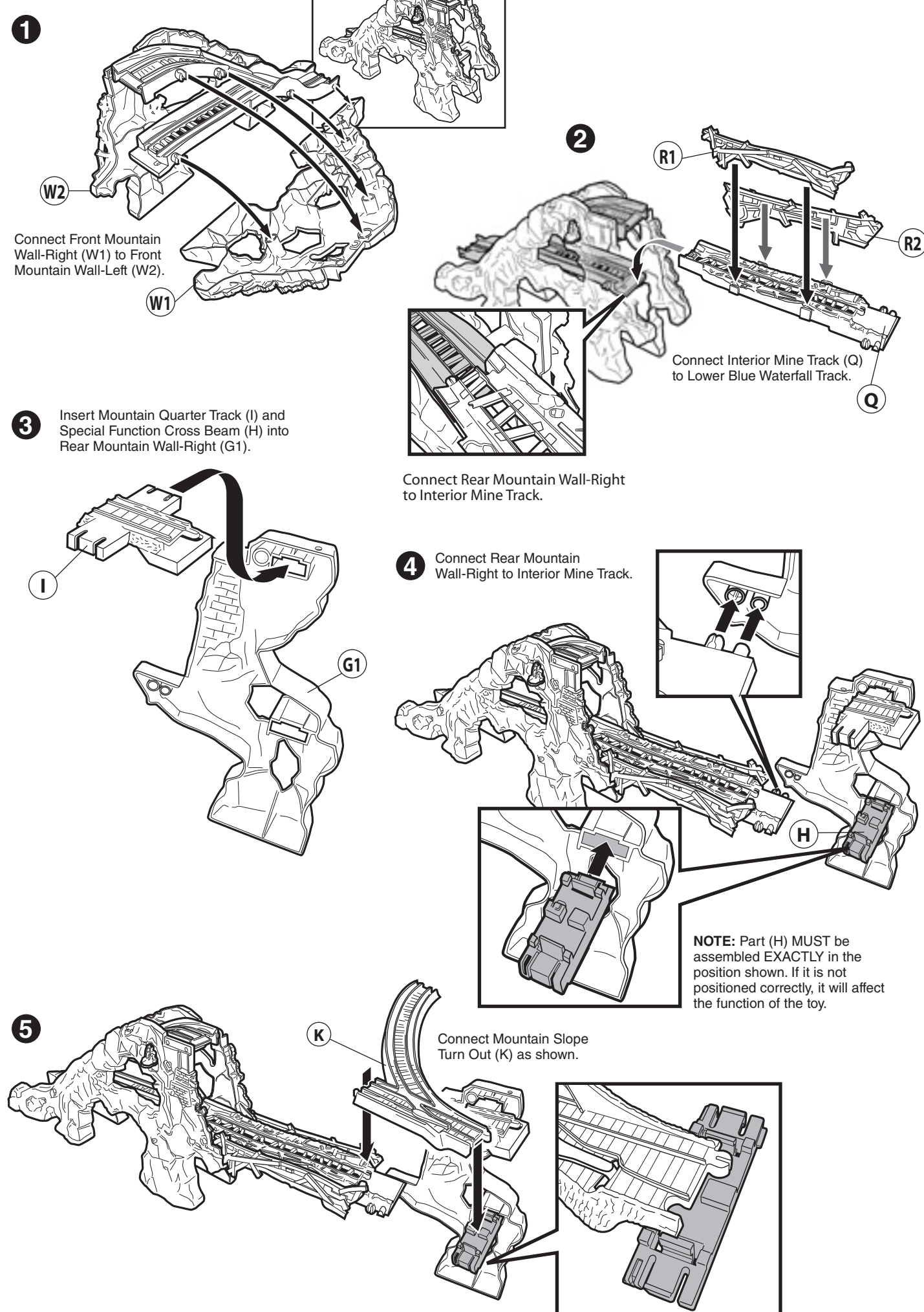


## Waterfall Assembly

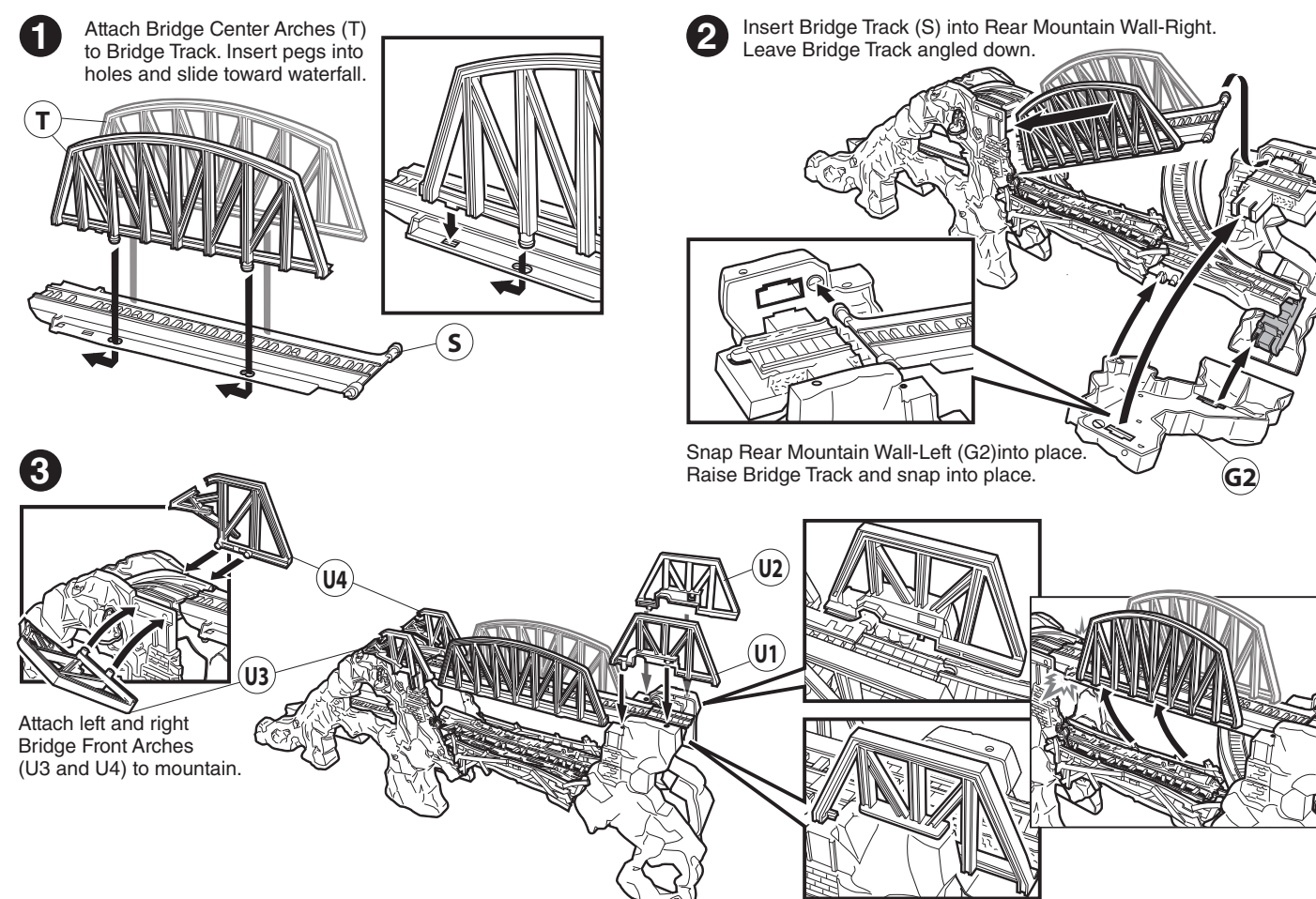


ADULT ASSEMBLY REQUIRED. No tools required for assembly.

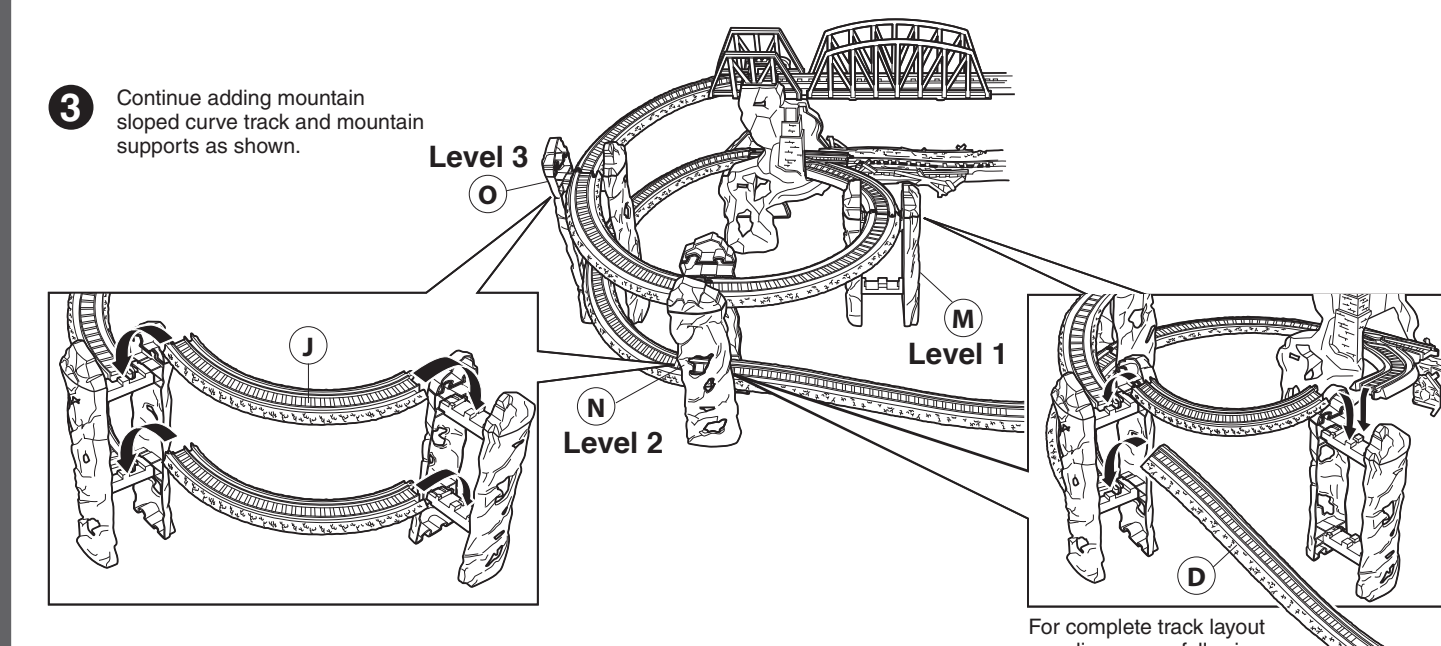
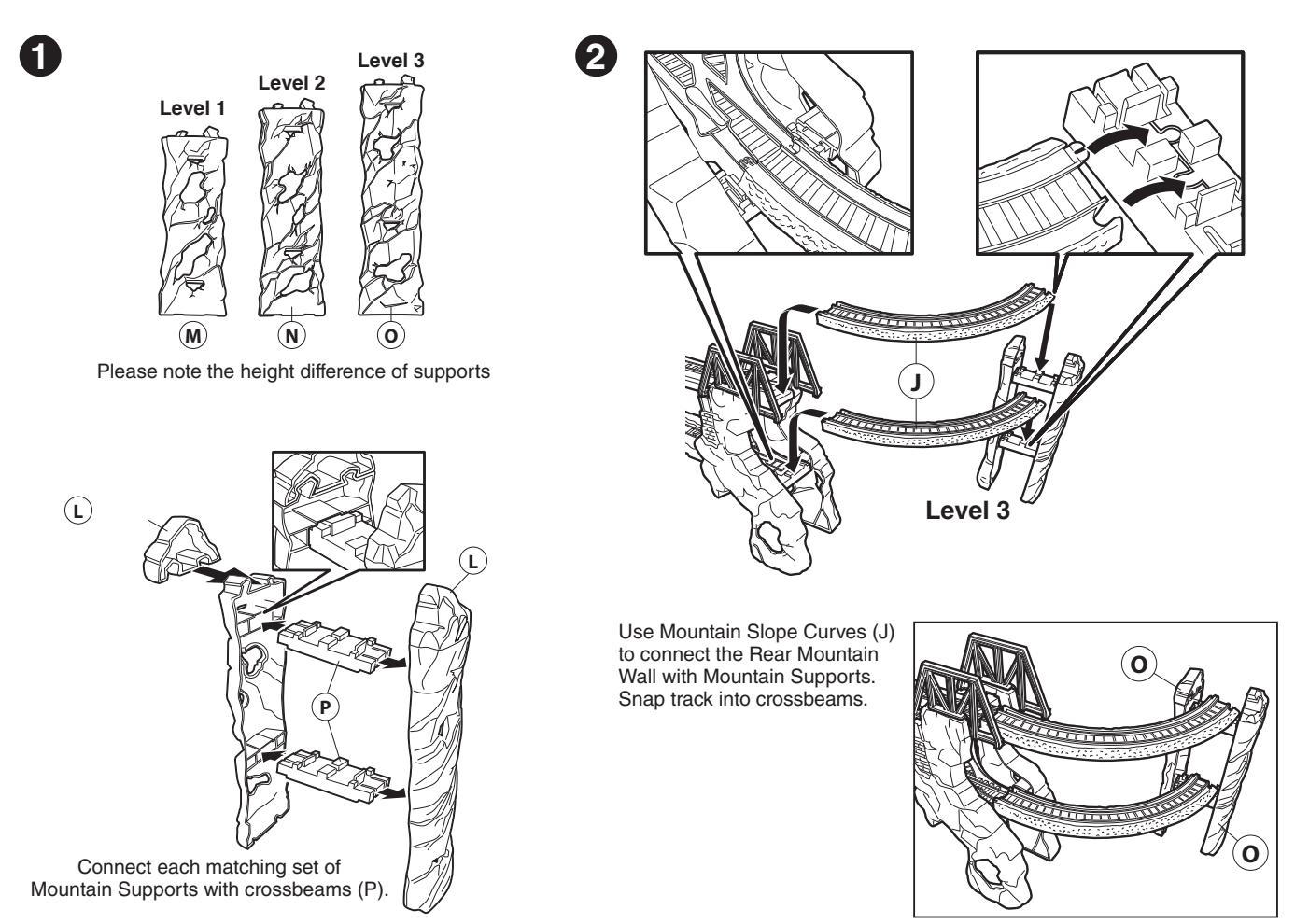
## Mountain Assembly



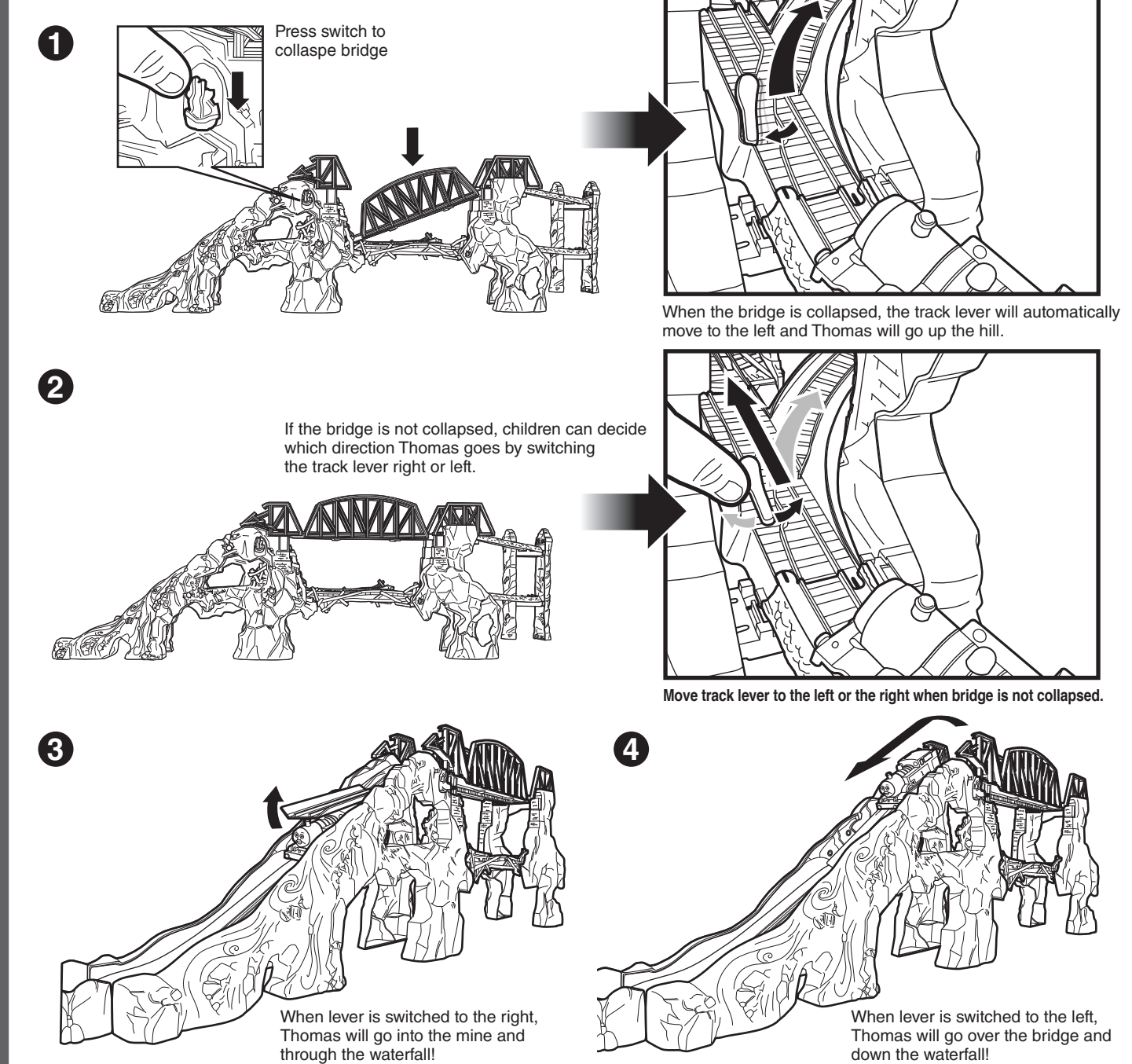
## Bridge Assembly



## Track Levels Assembly



## How To Play



Instruction page sequence:

Side 1	P.5	P.6	COVER
--------	-----	-----	-------

Side 2	P.2	P.3	P.4
--------	-----	-----	-----

Item No : W3078-0920  
Version : 01  
Size : 24.8" x 11.69"  
Paper : Woodfree paper 80 gsm  
Color : Black  
Date : April 27, 2011 (WC)